

# **TCF-S Focuser Control**



The **TCF-S Focuser** program has been designed for use with the Optec TCF-S series Temperature Compensating Focusers.

This help document provides instruction and assistance in using this standalone Windows program. Optec has also developed an [ASCOM](#) driver for use with other [ASCOM](#) compliant software. Visit the [Optec download page](#) to obtain the latest TCF-S ASCOM driver. Drivers for Linux based software are being developed and will also be available from the [Optec download page](#) as they are available. The effort is called the Instrument-Neutral-Distributed-Interface or [INDI](#) for short. Visit the [INDI](#) page and check under [Device Support](#) for more information.

This Help document is organized into the following chapters:

## [Installation](#) -

- ▶ [About](#) -
- ▶ [License](#) -
- ▶ [Requirements](#) -
- ▶ [Installing](#) -
- ▶ [Starting](#) -

## [Operation](#) -

- ▶ [Selecting COM Port](#)
- ▶ [Device Setup](#)
- ▶ [Main Form](#)
- ▶ [Focus Offsets](#)
- ▶ [Focus Presets](#)

## [FAQ & Troubleshooting](#) -

- ▶ [Page cannot be displayed](#)
- ▶ [Error Codes](#)
- ▶ [Determining COM Port](#)

## [Other Resources](#)

*Optec, Inc. makes no warranties either expressed or implied about **TCF-S Control** software.*

*Please note: These help files are sometimes updated. The latest version can always be found online at:*  
[http://www.optecinc.com/astronomy/software/docs/tcf-s\\_help/TCF-S\\_Help.htm](http://www.optecinc.com/astronomy/software/docs/tcf-s_help/TCF-S_Help.htm)



### Chapter 1: Installation

- ▶ [About](#)
- ▶ [License](#)
- ▶ [Requirements](#)
- ▶ [Installing](#)
- ▶ [Starting](#)

### About

---



Thank you for installing the **TCF-S Focuser** control program. **TCF-S Focuser** is a stand-alone Windows program designed for testing, setting parameters, and operating the Optec TCF-S line of Temperature Compensating Focusers. The latest version of this program will communicate with and control all revisions of the following focuser models:

- **TCF-S**
- **TCF-Si**
- **TCF-S3**
- **TCF-S3i**

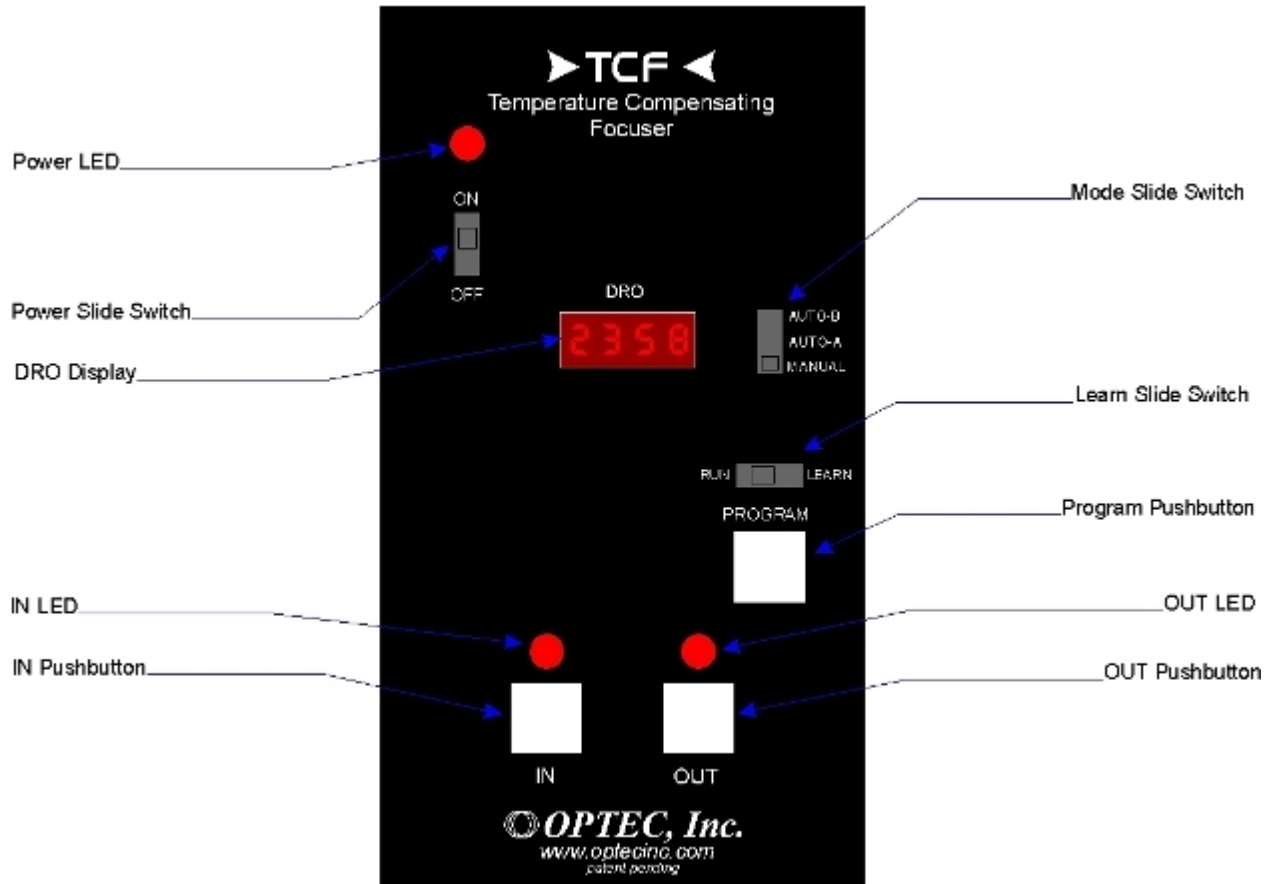


You can learn more about the TCF-S focusers by visiting the Optec web page located at:  
<http://www.optecinc.com/astronomy/tcf-s.htm>

Check the Optec, Inc. web site often to download the most current version of **TCF-S Focuser Control** or to download the

[ASCOM](#) standard driver or Linux drivers (soon to be released).

A pdf copy of this help file can be found by visiting the Optec website. Click [here](#) to download the current pdf version for this help file.



## License

---



By installing and using **TCF-S Focuser** software, you agree to Optec's license terms below.

**TCF-S CONTROL AND THESE MATERIALS ARE PROVIDED "AS-IS": NEITHER OPTEC, INC., ITS AUTHORS, NOR ITS SUPPLIERS MAKES ANY WARRANTY, EXPRESS OR IMPLIED WITH RESPECT TO THE CONTENT OF THESE MATERIALS OR THE ACCURACY OF THE TCF-S CONTROL PRODUCT, INCLUDING, WITHOUT LIMITATION, THE IMPLIED WARRANTIES OF MERCHANTABILITY OR FITNESS FOR A PARTICULAR PURPOSE. BECAUSE SOME STATES / JURISDICTIONS DO NOT ALLOW EXCLUSIONS OF IMPLIED WARRANTIES, THE ABOVE LIMITATION MAY NOT APPLY TO YOU.**

**IN NO EVENT SHALL OPTEC, INC., THE AUTHOR, OR ITS SUPPLIERS BE LIABLE FOR ANY DAMAGES WHATSOEVER (INCLUDING, WITHOUT LIMITATION, DAMAGES FOR LOSS OF BUSINESS PROFITS, BUSINESS INTERRUPTION, LOSS OF BUSINESS INFORMATION, OR OTHER PECUNIARY LOSS) ARISING OUT OF THE USE OF OR INABILITY TO USE THIS TCF CONTROL PRODUCT, EVEN IF OPTEC, INC., HAS BEEN ADVISED OF THE POSSIBILITY OF SUCH DAMAGES. BECAUSE SOME STATES DO NOT ALLOW THE EXCLUSION OR LIMITATION OF LIABILITY FOR CONSEQUENTIAL OR INCIDENTAL DAMAGES, THE ABOVE LIMITATION MAY NOT APPLY TO YOU.**

## Requirements

---



### ▶ **TCF-S Focuser Control Requirements**

The **TCF-S Control** program will run on any Windows based computer from WIN 95 through Windows 7. The program requires that the machine has the .NET framework 3.5 installed. The program uses very little of the system resources and should not interfere with any other operating programs. Neither printer nor graphic functions are used by **TCF-S Focuser**. It is necessary that the computer have an available COM port for communication with the TCF-S focuser. If the computer has no native comm ports, a USB-to-Serial port converter adapter may be used. Optec offers stock no. [17690](#), a USB-to-Serial converter known to work well with Optec devices. Any FTDI based converter should work equally well.

The connection from the TCF-S, TCF-Si, TCF-S3, or TCF-S3i Temperature Compensating Focuser to the PC requires a modular 6-wire cable with the appropriate 9-pin DB9 (serial port) and 6-pin RJ-12 connectors. Optec can supply this cable in any length along with stock no. [17695](#), our modular to DB9 converter for the modular Reverse cables. Users wishing to fabricate their own cables are referred to Appendix A of the [TCF-S Technical Manual](#).

The program automatically sets the communications port settings to operate at 19.2K baud. At this data rate, the cable length should to be 100-ft (30m) or less and of good quality. Erratic operation may be due to communication errors when the serial connections are not secure.

Of course, a Optec TCF-S focuser is also required. The TCF-S focuser should be turned on with the temperature probe connected when attempting to "Connect" to the device within **TCF-S Focuser** software.

### ▶ **ASCOM Driver Requirements**

Installation of the ASCOM driver requires that the .NET framework 3.5 is installed (available from Microsoft as free download) as well as the ASCOM Platform 5.5 available on the [ASCOM website](#).

## Installing

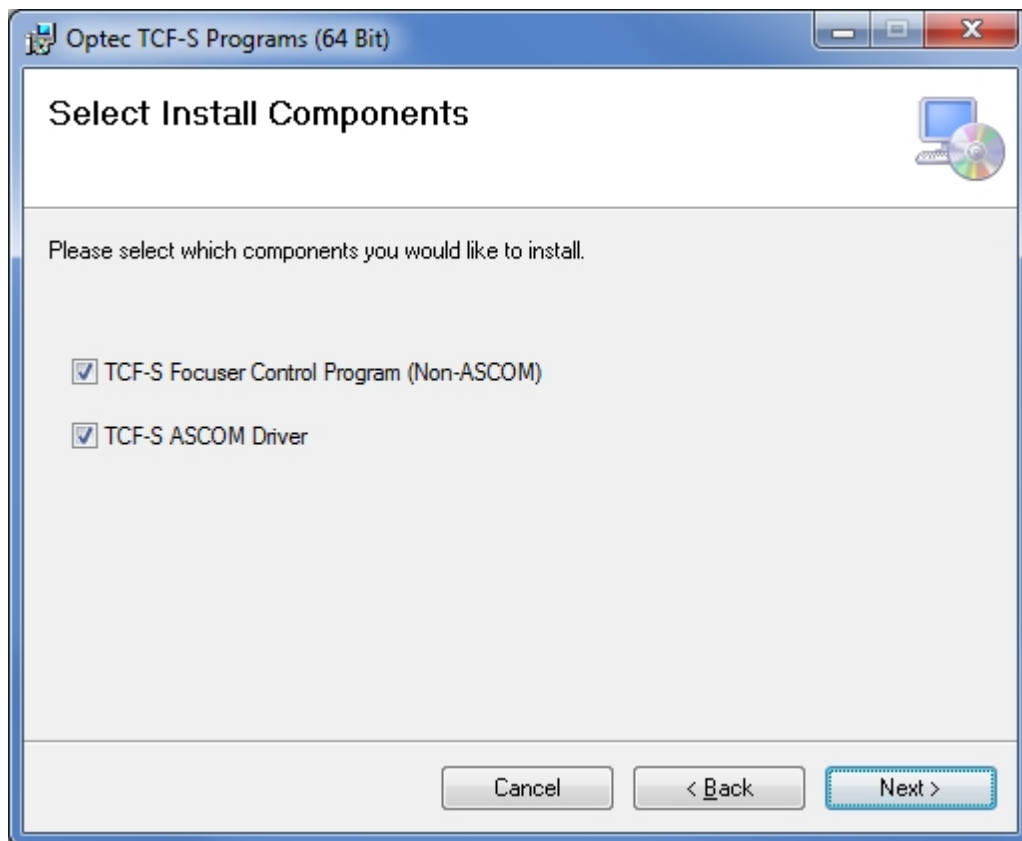
---



### ▶ **Installing the Software**

The software is available in two versions; one for 32-bit operating systems, and one for 64-bit operating systems. The installers are located in Zip files which can be found on the [Downloads](#) page on the Optec website. The zip files are named **OptecTCF-S\_Installer\_x86(x.x.x).zip** and **OptecTCF-S\_Installer\_x64(x.x.x).zip** for 32 and 64 bit operating systems, respectively.

After downloading the correct zip file save it to a location on your hard drive and extract the files. The zip folder will contain two files; double click the file named Setup.exe to begin the install. Follow the setup wizard until you get to the page titled *Select Install Components*. The installer gives the user the choice of installing the TCF-S Focuser Control Program and/or the TCF-S ASCOM Driver. Check the check-boxes for the components you wish to install and click next.



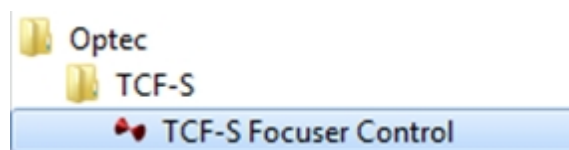
#### ► Location of Files

The default location for the program files including the data files is in the **Program Files** folder under **Optec/TCF-S**. The user can not specify any other location for the files during the installation.

#### ► The Start Menu

If the TCF-S Focuser Control program was selected for install a shortcut will be automatically placed in the following location.

*Start/All Programs/Optec/TCF-S/*



Right-click the shortcut and select Delete to remove it from your Start menu.

#### ► Desktop Icon

If the TCF-S Focuser Control program was selected for install a shortcut will automatically be placed on the user's Desktop. Double-click this shortcut to start the program.



## ▶ The Program Files

All of the necessary program files for the TCF-S Focuser Control program and the TCF-S ASCOM driver are located in the Program Files Folder/Optec/TCF-S. Removing any of the files in this folder or any of its sub-folders could cause the application to cease to function properly.

## Starting

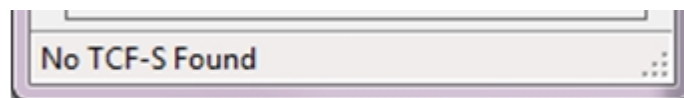
---



### ▶ Starting Optec TCF-S Focuser Control

#### >Auto Connect

Upon opening the TCF-S Focuser Control application the program will automatically attempt to connect to your TCF-S via the last selected COM port. If this is the first time running the program, it will use COM1. If a focuser is not connected to the last selected port, the status bar at the bottom of the program will display 'No TCF-S Found'. See the Operation section of this help file for information regarding how to select a COM port.



#### >New Version Checker

The TCF-S Focuser Control program, as well as the ASCOM Driver Setup Dialog form will automatically check for new updates to the program on every start up. This process will run silently in the background. If the most recent version of the application is already installed no notification will be displayed. However, if a newer version is available for download, a dialog box will be displayed alerting the user of the latest version number and a link to the download site. To update the program you must manually download the new version from the website and run the installer; this does not happen automatically.



### Chapter 2: Operation

- ▶ [Selecting COM Port](#)
- ▶ [Device Setup](#)
- ▶ [Main Form](#)
- ▶ [Focus Offsets](#)
- ▶ [Focus Presets](#)

### Selecting COM Port

---

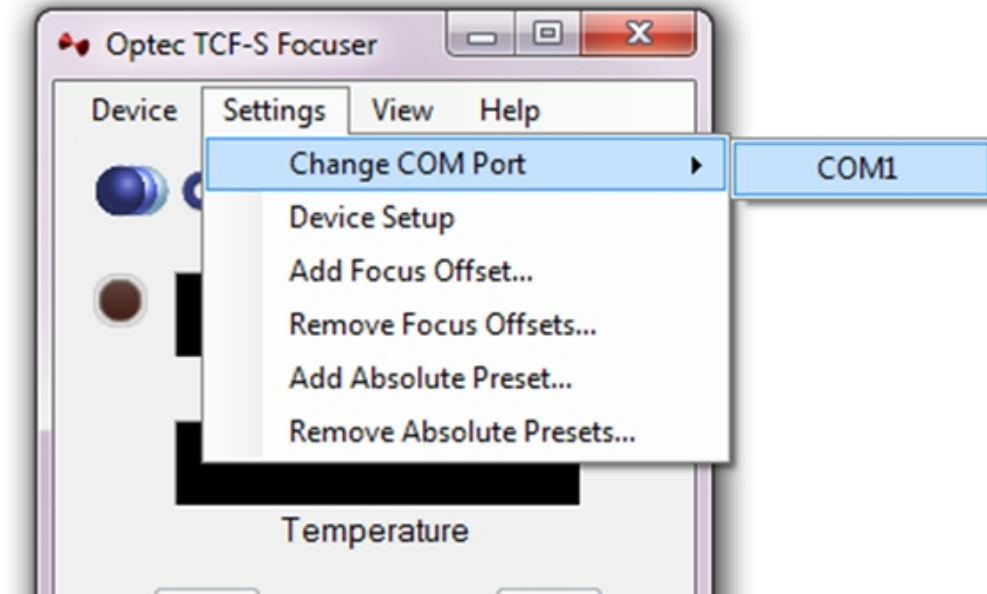


#### ▶ **Selecting a COM Port**

In order to connect to a focuser you must first select the proper COM port name so that the program knows where to look for the device. To change the selected COM port name, click Settings on the top menu bar and select Change COM Port. All available port names will be displayed to the right as shown in the image below. Click the name of the port you wish to use. If you do not see the desired port name listed, check if another program is currently using the port.

The COM port name can be selected via the ASCOM Driver Setup Dialog form or the TCF-S Focuser Control Program. Since these two programs share the same settings storage file any changes made in one program will be reflected in the other.





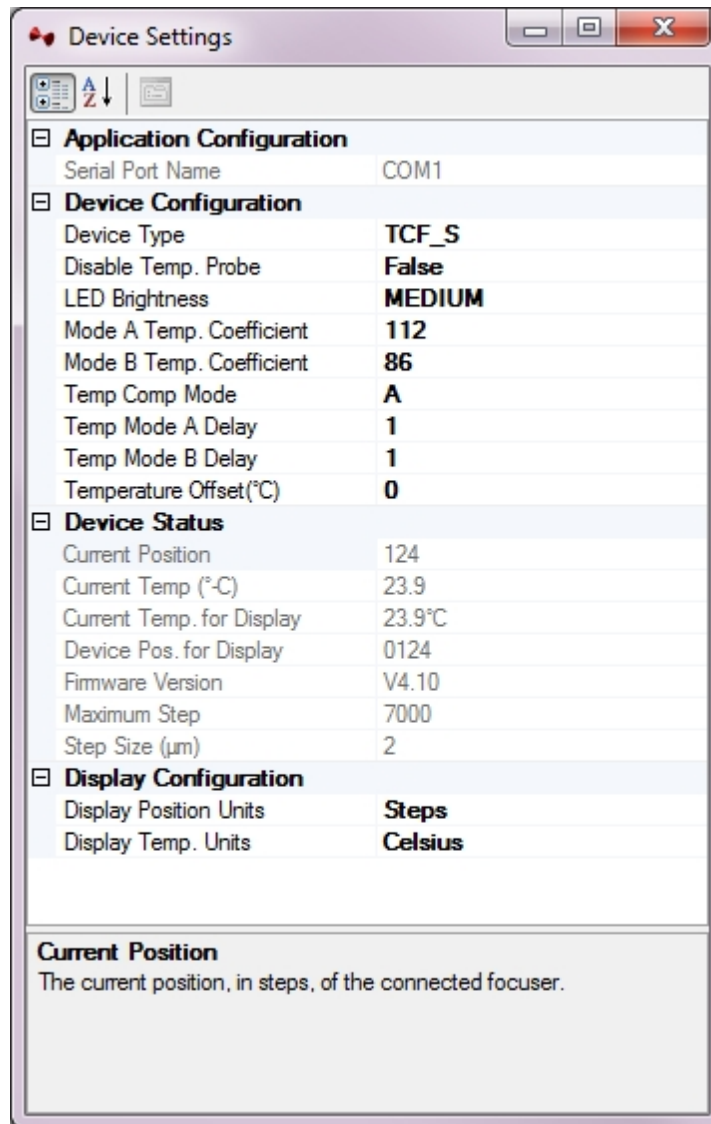
## Setup Variables

---



### ► Accessing Configuration Settings

Configuration of the device and program settings can be achieved via the TCF-S Focuser Control program or the ASCOM Driver Setup Dialog. Any change made in one will be reflected in the other program. To access the settings form in the TCF-S Focuser Control program click Settings on the main menu bar and select Device Setup. To access the settings from the TCF-S ASCOM Driver simply open the setup dialog from whichever client application you are using. The property grid shown below allows the user to view and edit all device settings.



### ▶ Serial Port Name (Read Only)

The *Serial Port Name* property displays the currently selected COM port. See [Selecting COM Port](#) for information regarding how to change the selected port.

### ▶ Backlash Compensation Enabled

This property is used to enable and disable the built-in backlash compensation of the focuser device. Not all versions of firmware include this feature. TCF-S focusers with firmware versions below 4.10 and TCF-Si focusers with firmware versions below 3.10 do not have backlash compensation available. TCF-S focusers with version 4.10 do not have the ability to disable the backlash compensation feature. Likewise, TCF-Si focusers with firmware versions below 3.10 do not have backlash compensation available. TCF-S version 4.11 and TCF-Si version 3.11 focusers do have the ability to disable the backlash compensation feature. This may be required for certain older programs where a timeout occurs when moving the focuser OUT.

### ▶ Device Type

The *Device Type* property displays which type of focuser the program is configured to work with. The latest firmware versions of the TCF-S focusers are able to report their device type to the application and thus the user would not have to set this property manually. However, older firmware versions did not have this feature. If the displayed Device Type is not the same as the actual type of focuser connected, click the property value and select the correct device type from the drop down menu. NOTE: You should always reboot a focuser after changing the device type property.

### ▶ Disable Temp. Probe

Not everyone chooses to use the temperature compensation feature of the TCF-S focuser. In such a case, the user can set the *Disable Temp. Probe* property to True. If the temperature probe is enabled and the probe is unexpectedly removed from the focuser, the application will automatically set the *Disable Temp. Probe* property to True. If you re-insert the probe back into the focuser you must manually set the *Disable Temp. Probe* property to False in order to

begin reading temperatures again. Obviously, if you plan to use the temperature compensation feature of the focuser the probe must be inserted and the *Disable Temp. Probe* property must be set to *False*.

### ▶ **LED Brightness**

On the newer firmware versions of the TCF-S focusers the user has the ability to adjust the brightness of the LED's and DRO (Digital Read Out) on the focuser hand control box. To set the brightness, click the *LED Brightness* property value and select the desired value. The program must be Connected to the focuser and the focuser must not be in Temperature Compensation or Sleep mode when changing the *LED Brightness*.

TCF-Si focusers do not have a hand control box and thus do not have a DRO. For that reason, the brightness of the LED on the focuser body can only be set to either ON or OFF.

### ▶ **Mode A/B Temp. Coefficient**

These properties display the temperature coefficients programmed into the focuser for temperature compensation modes A and B. The value displayed represents the number of steps the focusers stepper motor will move for each degree of change in temperature. The default value is set to 86 which is a typical coefficient for an f/10 Schmidt Cassegrain telescope as found in the Optec observatory. The program must be Connected to the focuser and the focuser must not be in Temperature Compensation or Sleep mode when changing this property.

### ▶ **Temp Comp. Mode**

Use this property to set which coefficient, A or B, is to be used when temperature compensation is activated either by an ASCOM client application or the TCF-S Focuser Control application.

### ▶ **Temp Mode A/B Delay**

The *Temp Mode A/B Delay* property can be used to adjust the time delay between temperature compensation adjustments. The default and minimum value allowed is 1 which represents a delay of approximately 500 ms. Each increment to this property adds an additional 5ms to the delay time. Note that if the actual focus is far from the target position (this could result from a large temperature change occurring over a short time) the focuser will disregard the delay value and move to the target position at a much faster rate. The program must be Connected to the focuser and the focuser must not be in Temperature Compensation or Sleep mode when changing this property.

### ▶ **Temperature Offset**

The temperature probes used in the TCF-S probe are not accurately calibrated, however they are precise. This means that they can report a change in temperature with great certainty while the absolute temperature reading may not exactly reflect the current conditions as measured by a different thermometer. This does not in any way affect the performance of the focusers ability to temperature compensate because only differential temperature measurements (changes in temperature) are needed. That being said, if the user wishes to apply an offset to the Temperature reading to adjust the TCF-S reported temperature to match the true ambient temperature, they can do so via the *Temperature Offset* property. Changing this property will in NO WAY affect the functionality of the focuser. It will change the temperature displayed on the application's main form and the temperature returned by the ASCOM driver to client applications. The units of this property are in degrees Celsius.

### ▶ **Display Position Units** (TCF-S Focuser Control program ONLY)

This property allows the user to set the units of position as displayed on the programs main form. The users has the option of stepper motor steps or microns. Changing this property have no affect on the functionality of the focuser or the ASCOM Driver. This property can also be changed by left-clicking on the position read-out on the main form.

### ▶ **Display Temperature Units** (TCF-S Focuser Control program ONLY)

This property allows the user to set the units of temperature as displayed on the programs main form. The users has the option of degrees Celsius, degrees Fahrenheit, or Kelvin. Changing this property have no affect on the functionality of the focuser or the ASCOM Driver. This property can also be changed by left-clicking on the temperature read-out on the main form.

### ▶ **Backlash Comp. Available**

Displays the current status of the backlash compensation feature (enabled or disabled). TCF-S focusers with firmware versions below 4.10 and TCF-Si focusers with firmware versions below 3.10 do not have backlash compensation available.

▶ **Current Position**

Displays the current position, in steps, for the connected focuser.

▶ **Current Position for Display** (TCF-S Focuser Control program ONLY)

Represents the current position of the focuser in the units selected in the *Display Position Units* property.

▶ **Current Temperature**

Displays the current temperature, in degrees Celsius, for the connected focuser as read by the temperature probe and offset by the value of the *Temperature Offset* property.

▶ **Current Temp. for Display** (TCF-S Focuser Control program ONLY)

Represents the current temperature of the focuser in the units selected in the *Display Temp. Units* property and offset by the value of *Temperature Offset* property.

▶ **Firmware Version**

Displays the firmware version of the connected focuser. This value is determined by the software at the time the device is connected. If the TCF-S focuser contains an old firmware version it may not be capable of reporting its version number to the control software. If that is the case, the program will report "V.old" for the firmware version. Optec always recommends using the latest firmware revision in all of our products.

▶ **Maximum Step**

This property represent the maximum position that the focuser can travel to, in units of stepper motor steps. This value is determined based on the selected device type. Three inch focuser models have a maximum travel of 10,000 steps; two inch focusers have a maximum travel of 7000 steps.

▶ **Step Size**

This property represent the linear distance of focusers draw tube will travel per step of the stepper motor. This value is determined based on the selected device type. Three inch focuser models have a step size of 2.5 microns; two inch focusers have a maximum travel of 2 microns per step.

## Main Form

---



## ▶ Main Form

The main form of the Optec TCF-S Focuser Control program, shown on the right, gives you complete control over your focuser device.

## ▶ View Menu

The view menu allows the user to specify which controls appear on the main form. All controls are displayed by default. Click view and uncheck a control to remove it from the main form.

The *Always On Top* setting, when checked, will force the main TCF-S Focuser Control window to remain on top of all other program windows.

## ▶ Device Menu

The device menu allows the user to connect and disconnect from the focuser, enter and exit Temperature Compensation mode, enter and exit Sleep Mode and close the TCF-S Focuser Control program.

## ▶ Logos

The logos at the top of the screen provide hyperlinks to the Optec Inc. website and official ASCOM website. Clicking either logo will open a new internet browser window.

## ▶ Connection Indicator Light

The connection indicator light, located to the left of the Position readout, gives the user a visual indication of whether the focuser is connected or not. The user can click the Connection Indicator Light to connect or disconnect from the focuser at any time (assuming the focuser is physically connected to the computer and the correct COM port has been selected).

## ▶ Position Readout

When a focuser is connected the Position Readout gives the user an indication of the current position of the focuser. Clicking the Position Readout causes the display to change units.

## ▶ Temperature Readout

When a focuser is connected, the Temperature Readout gives the user an indication of the current temperature as measured by the temperature probe. If the temperature probe is not inserted or is disabled the Temperature Readout will display "DISABLED". Left-click the Temperature Readout to change the displayed units for the temperature. Right-click the Temperature Readout to enable or disable the probe.

## ▶ Relative Move Controls

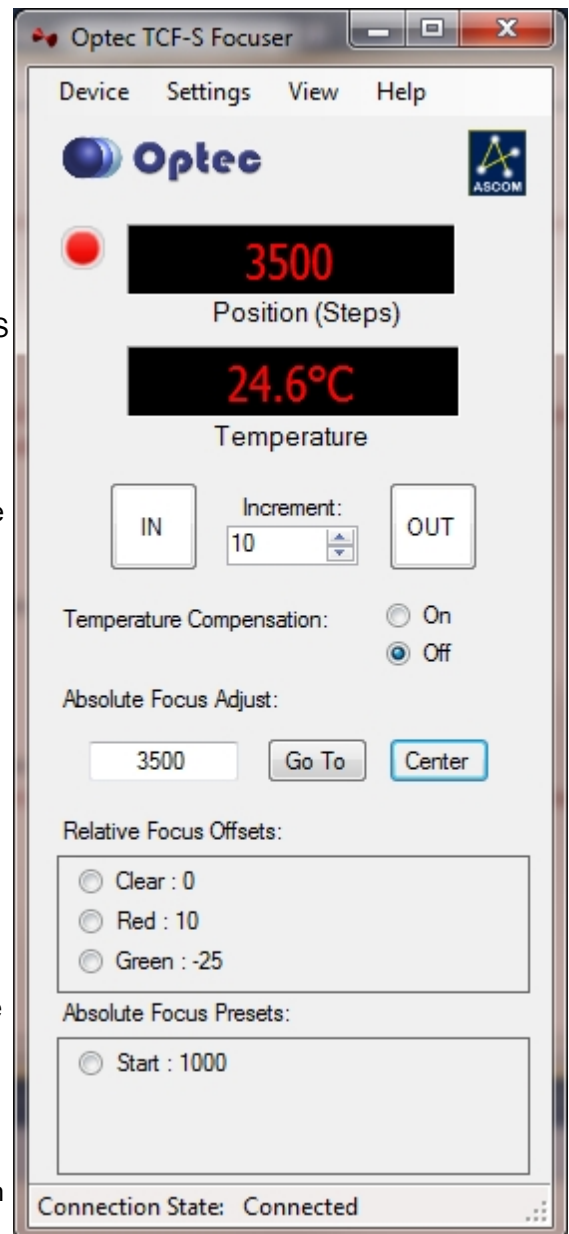
The relative move controls allow the user to manually change the focus by pressing the *IN* and *OUT* buttons. Use the *Increment* box to set how many steps the focuser will travel for every button press.

## ▶ Temperature Compensation

The Temperature Compensation controls allow the user to turn temperature compensation on or off. This functionality is only available when the device is connected.

## ▶ Absolute Focus Adjust

The Absolute Focus Adjust controls allow the user to send the focuser to a specific absolute position. Enter a position in the box and press the *Go To* button to change focus to a new position. Press the *Center* button to move the focuser to the center of its possible travel.



▶ **Relative Focus Offsets**

See [Focus Offsets](#).

▶ **Absolute Focus Presets**

See [Focus Presets](#).

---

## Focus Offsets

---

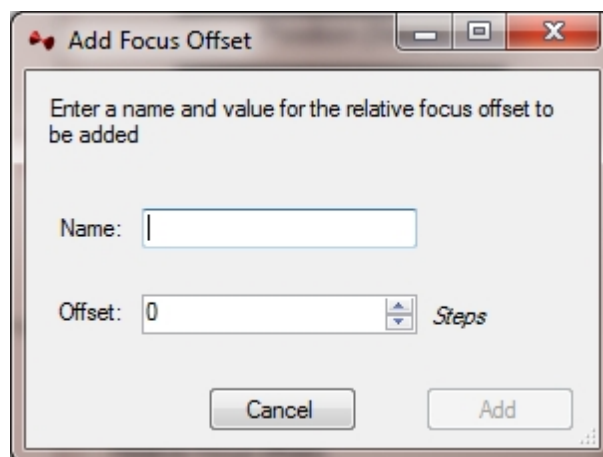


▶ **Why are Focus Offsets Needed?**

The TCF-S Focuser Control program gives you the ability to create and store relative focus offsets. The intention is that these offsets would be used by customers who are using the program in conjunction with a filter wheel. When changing from one filter to another, a focus change is often required because the optical system does not always focus all wavelengths at the same focal plane. A small offset can be entered for each filter used.

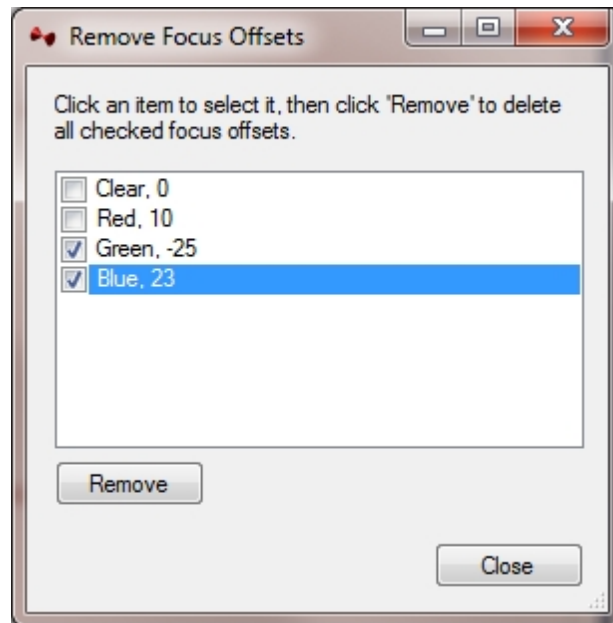
▶ **How to add a Focus Offset**

First of all, if the *Relative Focus Offsets* panel is not visible on the main form, select *View* from the main tool bar and click the *Relative Focus Offsets* item. To add a focus offset right-click in the *Relative Focus Offsets* pane and select *Add Offset* from the context menu. This will open up the *Add Focus Offset* form as shown below. On the form, type in a name for the new offset (e.g. LUMINANCE, Clear, BLUE, or H-Alpha), then enter the number of steps to offset from the default filter. A good idea is to set the offset for your default filter to 0. All other filter offsets will be *Relative* to this focuser position. Click *Add* to add the offset. Repeat this process for additional offsets.



▶ **How to remove a Focus Offset**

To remove focus offsets right-click in the *Relative Focus Offset* pane and select *Remove Offsets* from the context menu. This will open up the *Remove Focus Offsets* form as shown below. Check the boxes next to the offsets that you wish to remove and click the *Remove* button. This will remove the selected offsets. Click *Close* when you are finished removing offsets.



## Focus Presets

---

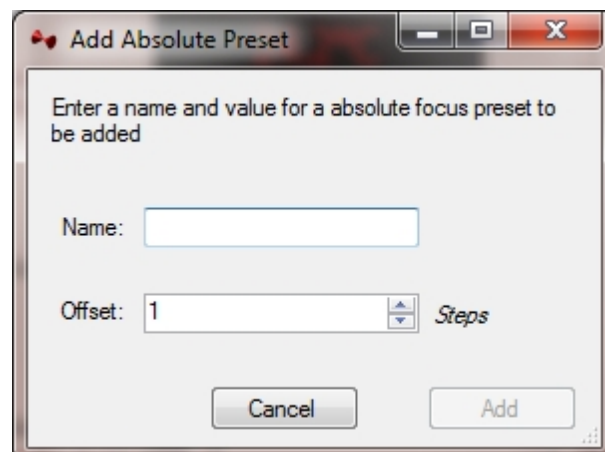


### ► Why are Focus Presets Needed?

The TCF-S Focuser Control program gives you the ability to create and store absolute focus Presets. The intention of Presets is to provide the user the ability to quickly change focus to a specific stored position. For example, if you know that your optical system focuses somewhere near 1000 steps, you may want to create an absolute focus preset at 1000. This way before running a focus routine you could quickly move close to your focus point and shorten the time of the focusing routine.

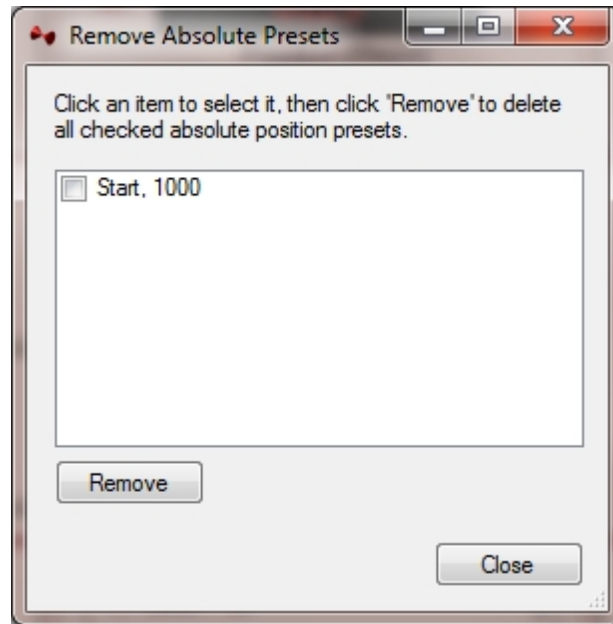
### ► How to add an Absolute Focus Preset

First of all, if the *Absolute Focus Presets* Panel is not visible on the main form, select *View* from the main tool bar and click the *Absolute Focus Presets* item. To add a focus Preset right-click in the *Absolute Focus Presets* Panel and select *Add Preset* from the context menu. This will open up the *Add Absolute Preset* form as shown below. On the form, type in a name for the new Preset (at least one character), then enter the number of steps for the preset position. Click *Add* to add the Preset. Repeat this process for additional Presets.



▶ **How to remove a Focus Preset**

To remove Absolute Focus Presets right-click in the *Absolute Focus Preset Panel* and select *Remove Absolute Presets* from the context menu. This will open up the *Remove Absolute Presets* form as shown below. Check the boxes next to the Presets that you wish to remove and click the *Remove* button. Click *Close* when you are finished removing Presets.







---

### Chapter 3: FAQ & Troubleshooting

- ▶ [Connect Errors](#) - Most common solutions to connection errors.
- ▶ [Determining COM Port](#) - Checking the Device Manager for assigned COM port.
- ▶ [Error Codes](#) - Focuser generated error codes.
- ▶ [Page cannot be displayed](#) - Windows Help engine error.

---

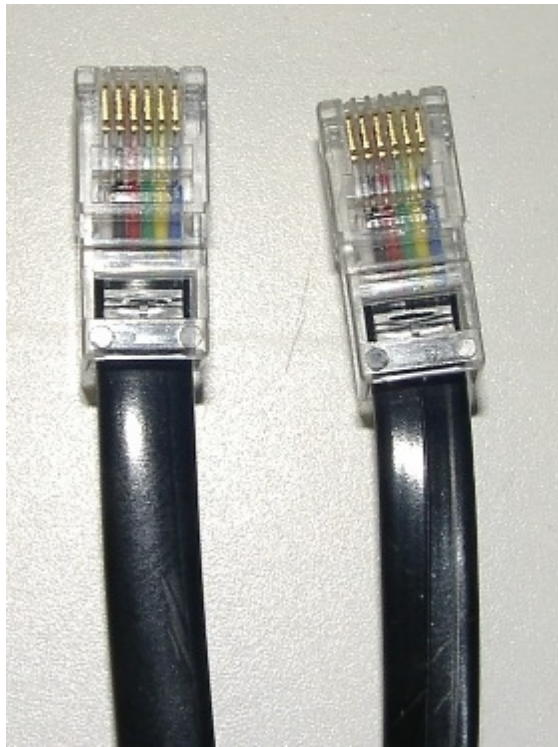
### Connect Errors



---

**Connect Errors** - the most common connection errors occur due to faulty or intermittent connections. If you receive a "Error connecting to TCF" error, check the following possible problem sources.

- ▶ Check the COM port assignment of your USB-to-Serial converter as described under [Determining COM Port](#).
- ▶ Check that the PC Serial Port connector, if not purchased from Optec, is wired correctly.
- ▶ Check the flat Reverse cable. You easily check that each end of the RJ12 connectors are wired straight through. That is, Pin 1 on one connector should be connected to Pin 1 on the opposite connector. When looking at the Reverse cable connector ends, the wire colors should appear identical as shown below.



- ▶ Check that the RJ12 connectors are properly inserted into the TCF-S focuser control box and the PC Serial Port Converter.
- ▶ For TCF-S/TCF-S3 users, be certain the hand control Mode slide switch is set to the PC/Manual position. If either AUTO-A or AUTO-B is selected, a serial connection cannot be made. The Learn slide switch must also be set to RUN for proper operation. (See [About](#) for a view of the hand controller.)

## Determining COM Port

---



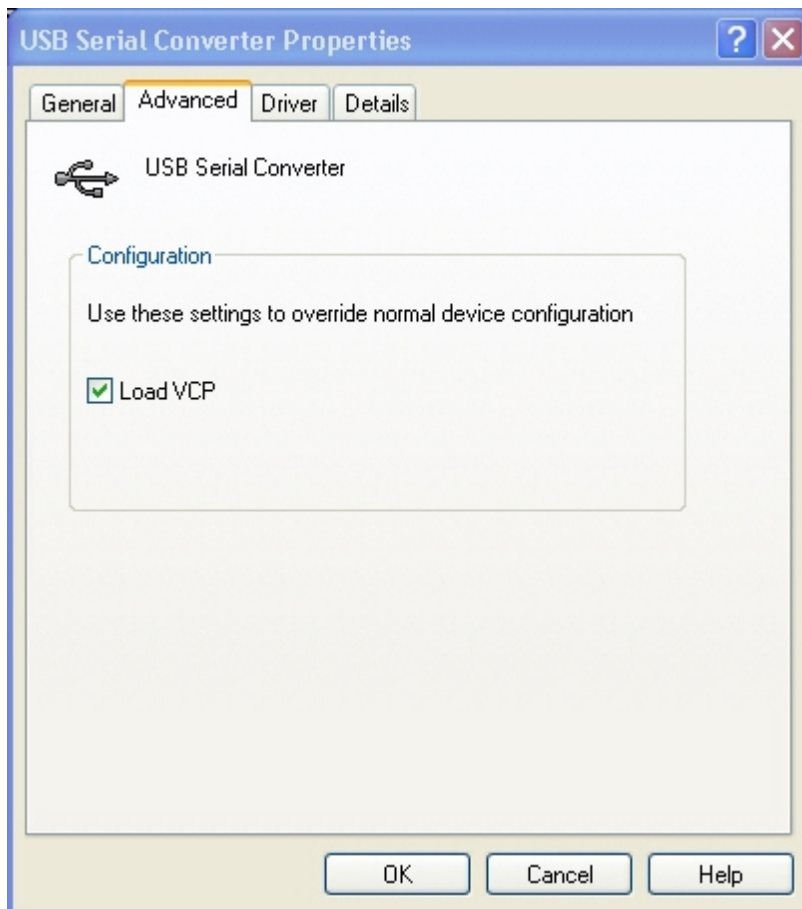
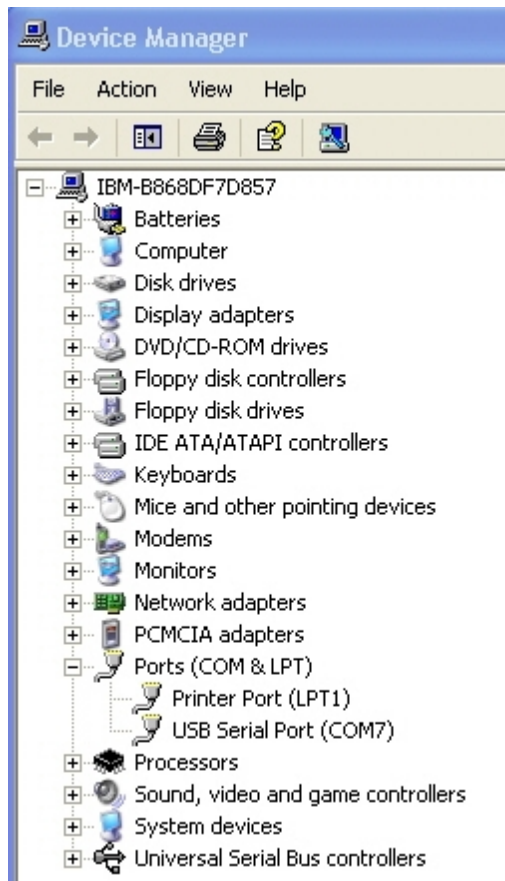
---

One of the first problems encountered when using the USB-to-Serial port converters is trying to determine which COM port is assigned.

### ▶ **COM Port Assignments**

The instructions below provide the easiest way to set up the USB-to-Serial port converter. To display the Device Manager in Windows, click Control Panel, or right-click on the My Computer icon and select Manage. Select Device Manager under System Tools.

Follow the instructions at right below.



1. Before plugging your new converter into your computer, make sure that any existing old drivers for the FTDI chips set have been removed. Do this by going to the Add/Remove Programs in the Control Panel and find any listing of "FTDI drivers" and remove it. If you have any older USB-to-Serial Converters using the FTDI chip set, you can remove them now.
2. From the Optec Install disk or from the Optec web site at: or from clicking on the FTDI 2.02.04 driver link above, download and run the executable setup program. This setup program is for Windows operating systems: Win2000, XP and VISTA. You will not see any message if the program loads successfully.
3. After running the setup program, you can now plug in one of your FTDI chip set USB-to-Serial converters. To find the COM number that was selected for each USB-to-Serial converter, go to your Device Manager (PATH: My Computer - Control Panel - Systems - Hardware) and check to see the COM port number listed under Ports (COM & LPT). See the diagram on the left which has COM7 selected for the USB-to-Serial Converter. You can then plug your other converters in one at a time to see which COM number have been selected for those.
4. **IMPORTANT NEW INFORMATION:** There have been some recent changes with the firmware installed in the USB-to-Serial converters that Optec supplies after July 2007 that may require an additional computer setting to be modified. If you do not see the COM port number in the Device Manger screen as above, but do see messages that indicated that the USB-to-Serial converter is installed and ready, then the VCP (Virtual COM Port) box must be checked. Examine the second image at the left and see that no COM port number has been selected. Open the line item "Universal Serial Bus controllers" and select properties for the "USB Serial Converter" line item. Select the "Advanced" tab as shown in the third image at the left and check the "Load VCP" box. Unplug the USB-to-Serial converter and then plug it back in. You should see the COM port number appear under Ports as described in

	paragraph 3. This will effect all converters that are connected.
--	--

## Error Codes

---



The TCF-S focusers communicate with **TCF-S Control** through an ascii command set as described in the [TCF-S Technical Manual](#). The TCF-S firmware and protocol display error codes for common problems that might occur at the hardware level. **TCF-S Control** will handle most of these errors and display a suitable message, but occasionally you may see one of the error codes below:

- ▶ **ER=1** Temperature probe not connected or not working.  
This is the most common fault and can usually be traced to a missing temperature probe or faulty wiring. Check the temperature probe connection first. Also check the Control cable connection at the TCF hand control.

Note: If using the [Remote IN/OUT Keypad](#) (Optec stock #17680) the software will throw an error. Though the Remote Keypad is "hot-swappable" it is advised that you Disconnect from **TCF-S Control** software before using it.

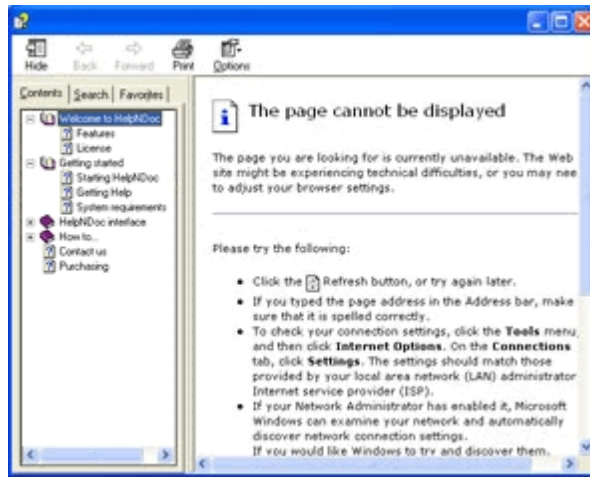
**SPECIAL NOTE:** If the PC serial control cable is inadvertently plugged into the RJ-45 connector of the TCF-S hand control box (the left-most connector) pins 1 and 8 may be pushed down and fail to make a proper contact. Pin 1 is the ground pin for the temperature probe. If this connection fails intermittently, an **ER=1** error code will result. If you are experiencing intermittent connection problems, examine the pins of the RJ-45 connector using a good light and magnifier. Check all the pins are lined up evenly. If not, use a pair of tweezers to bend pins 1 and 8 upward and back in line.

- ▶ **ER=2** New calculated position when unit turned on in AUTO-A or AUTO-B exceeds limits.  
Try re-centering the focuser and adjusting the telescope's coarse focus. This error should never be passed to the **TCF-S Control** software. If it is displayed, check that the slide switches are in the "Manual/PC"
- ▶ **ER=3** EEPROM failed read/write test on boot up.  
Contact Optec is this error condition occurs repeatedly.

Page cannot be displayed

---





## Symptoms

Microsoft's HTML Help Viewer is showing an error page saying either that:

- "The action has been canceled"
- "The page cannot be displayed"

## Solutions

- Make sure your help file is not accessed from a network path or via a mapped networked drive. Try to copy the file locally and launch it again;
- Make sure your help file isn't in a path with symbols such as "#" (sharp). Once again, try to copy it locally before launching it;
- In some cases, you can have access to an "unlock" button in the properties page of the help file. Right click on the file then go to its properties and click the "unlock" button. This button is not available in all systems though.



---

### Chapter 4: Other Resources

There are many resources on the internet to help you use the TCF-S focuser. Visit the [Optec website](#) first.

If unable to connect to the internet, or with any other questions at all, please feel free to contact Optec Support by telephone at:

▶ Optec Support: 616-897-9351

[http://www.optecinc.com/astronomy/software/docs/tcf-s\\_control/files/SetupVariables.html](http://www.optecinc.com/astronomy/software/docs/tcf-s_control/files/SetupVariables.html)