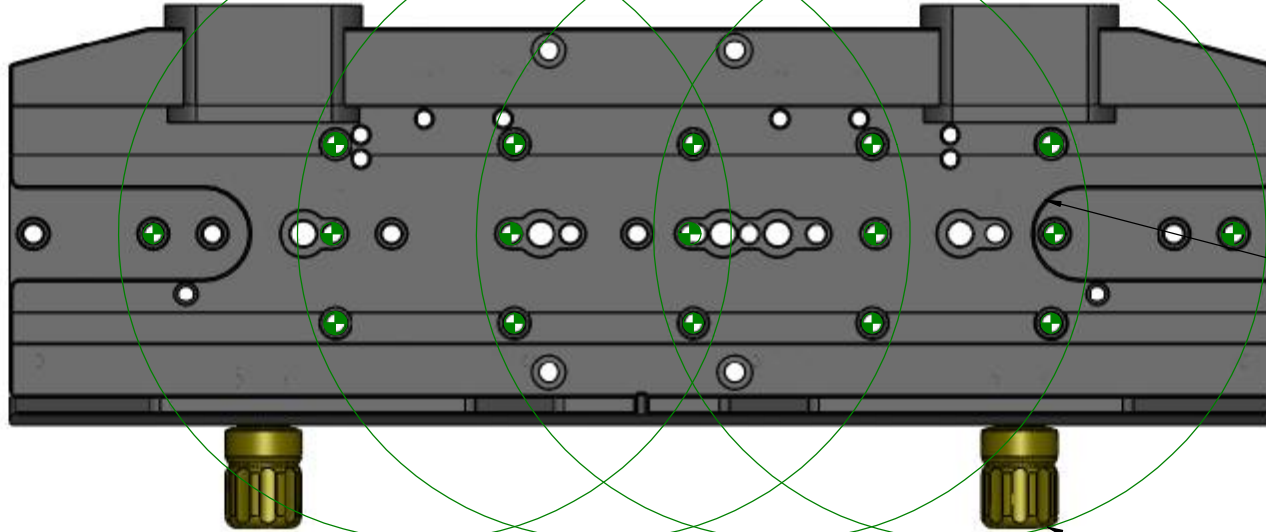


STOCK NO. 19239
KELLER EZ-SADDLE



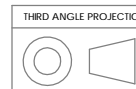
ASTRO-PHYSICS AP-1200 GTO
FOUR 6-HOLE LOCATIONS AVAILABLE

BOLT KIT INCLUDES:
SIX (6) 1/4"-20 X 1" STAINLESS SHCS
(THROUGH HOLE TO SCREW INTO DEC PLATE)

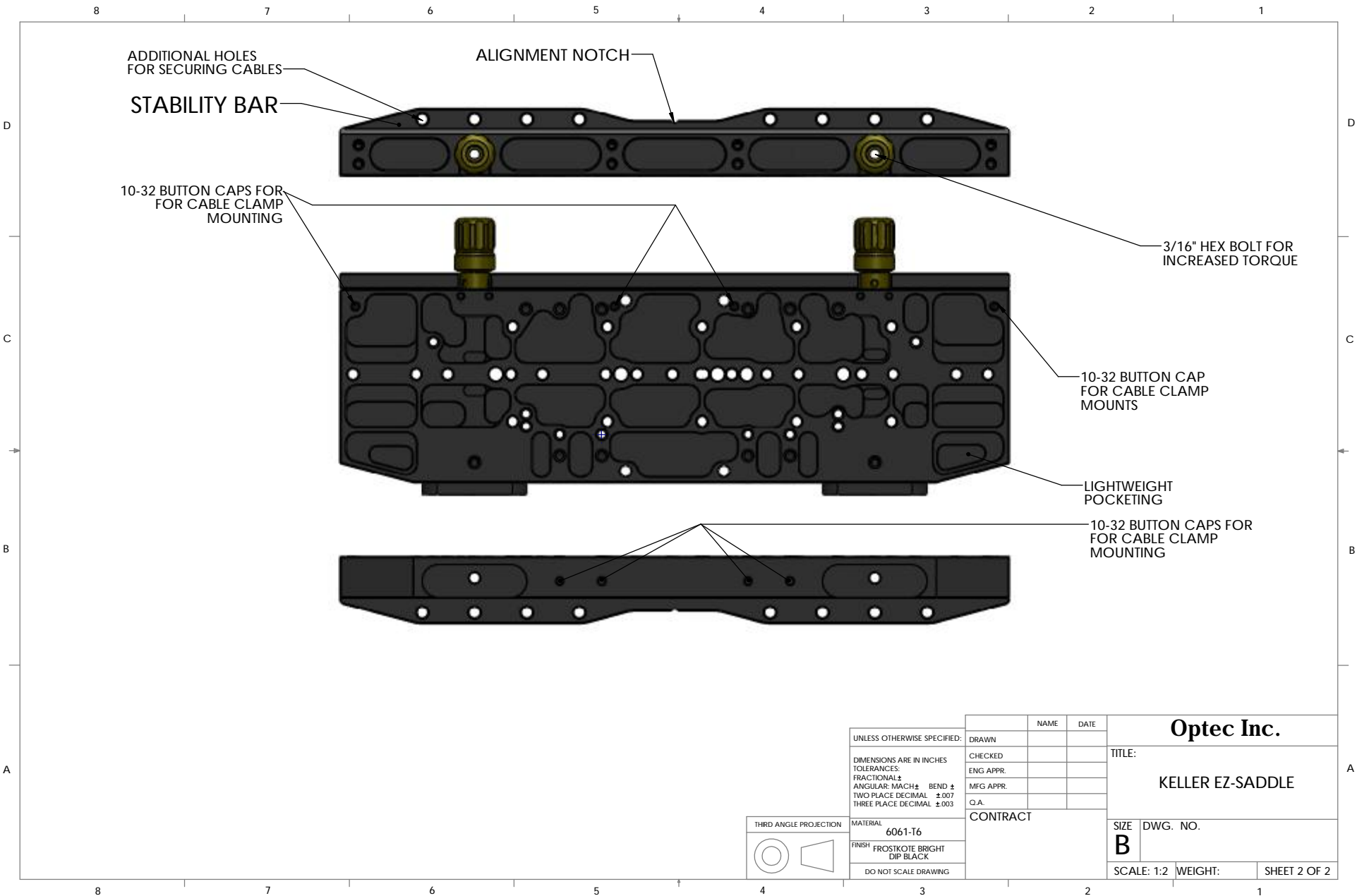
OUTLINE OF AP-1200
DECLINATION MOUNTING SURFACE

NOTCH FOR D PLATE
1/4-20 SAFETY BOLT

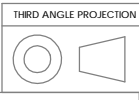
KNOBS ON OPPOSITE
SIDE OF CLAMPS FOR
STABLE LOADING AND
UNLOADING



UNLESS OTHERWISE SPECIFIED: DIMENSIONS ARE IN INCHES TOLERANCES: FRACTIONAL ± ANGULAR: MACH ± BEND ± TWO PLACE DECIMAL ±.007 THREE PLACE DECIMAL ±.003	DRAWN	NAME	DATE	Optec Inc. TITLE: KELLER EZ-SADDLE SIZE DWG. NO. B
	CHECKED			
	ENG APPR.			
	MFG APPR.			
	Q.A.			CONTRACT
MATERIAL	6061-T6			SCALE: 2:3
FINISH	SEE NOTES			WEIGHT:
DO NOT SCALE DRAWING				SHEET 1 OF 2



UNLESS OTHERWISE SPECIFIED: DIMENSIONS ARE IN INCHES TOLERANCES: FRACTIONAL ± ANGULAR: MACH ± BEND ± TWO PLACE DECIMAL ±.007 THREE PLACE DECIMAL ±.003	DRAWN	NAME	DATE	Optec Inc. TITLE: KELLER EZ-SADDLE
	CHECKED			
	ENG APPR.			
	MFG APPR.			
	Q.A.			
CONTRACT				SCALE: 1:2 WEIGHT: SHEET 2 OF 2



MATERIAL
6061-T6
 FINISH FROSTKOTE BRIGHT
 DIP BLACK
 DO NOT SCALE DRAWING